

CONGA

CONGA 4000 CARPET&SPOT CLEAN

Aspirador de tapicerías / Carpet cleaner



cecotec

Manual de instrucciones
Instruction manual
Manuel d'instructions
Bedienungsanleitung
Manuale di istruzioni
Manual de instruções
Handleiding
Instrukcja obsługi
Návod k použití

SAFETY INSTRUCTIONS

Please, keep this instruction manual in a safe place for future reference or new users.

- Read these instructions carefully before assembling or using your carpet cleaner. These instructions contain important information that will help you get the best out of your equipment. It is your responsibility to make sure every user is informed about the warnings and precautions stated in this instruction manual.
- This appliance can be used by children aged 8 years and above and persons with reduced physical, sensory, or mental capabilities or lack of experience and knowledge if they have been given supervision or instruction concerning the use of the appliance in a safe way and understand the hazards involved. Children must not play with the device. Cleaning and user maintenance should not be carried out by unsupervised children.
- This device is designed for domestic use only and is not intended for bars, restaurants, farmhouses, hotels, motels, and offices.
- **WARNING:** check that the upholstery cleaner and package are not damaged. Never use the device if it is damaged. Should it be the case, immediately contact Cecotec's Technical Support Service.
- Packaging material may be dangerous to children. Remove it and place it out of their reach.
- The upholstery cleaner plug must be connected to a grounded socket. If you do not have a grounded socket, a grounded installation must be carried out by a licensed electrician. In case of ungrounded use, Cecotec shall not be liable for any malfunction or damage that this may cause.

- Make sure that the mains voltage matches the voltage stated on the appliance marking and that the wall outlet is earthed.
- Always use the plug provided with the device. Do not modify the plug provided with the appliance if it does not match the power socket.
- Check the power cord regularly for visible damage. If the cable is damaged, it must be replaced by the official Cecotec Technical Support Service in order to avoid any type of danger.
- Do not operate the appliance if its cord, plug, or structure show visible damage, do not operate properly, or produce unusual sounds or odours.
- In case of malfunctioning, repairs must be carried out by the official Technical Support Service of Cecotec; otherwise, the warranty will be void.
- To unplug the device, pull from the socket, never from the cord.
- Do not immerse the cable, plug, or any other part of the appliance in water or any other liquid or expose electrical connections to water. Make sure your hands are dry before handling the plug or switching on the appliance.
- Disconnect the appliance from the electric circuit when it is not used.
- Disconnect the device from the power socket before carrying out any maintenance, cleaning, or transport.
- Do not use the device with pesticides, dyes, lubricants, or other liquids.
- Do not use the appliance to vacuum lit matches, cigarette ends, petrol gas, sources of heat, or hot ash.
- Do not use the device without installing the waste-water tank.

- The device is designed to clean carpets and upholstery, do not use it for any other purpose.
- This device is designed for personal use only and is not suitable for commercial use.
- Do not place the device near sources of heat, flammable substances, etc.
- If any strange object blocks any of the parts or you vacuum any strange object, stop using the device, empty it, and clean it to be able to use it again.
- This product is used to remove dirt through rinsing. Use tap water or alkaline ionised water at a temperature below 40°C.
- This product cannot be used to clean arts and crafts, non-waterproof fibres (nets, acetic acid, rayon, etc.), non-waterproof products (furs, leather products, white wooden furniture, tea sets, etc.) and vulnerable surfaces (floors, tables).
- When the waste-water tank exceeds the maximum water level, stop operating the device immediately and empty the waste-water tank before using the product again.
- When using detergent, dilute a low-foaming detergent with water and spray it over the object to be cleaned.
- When using detergent, make sure it will not leave any stains before using it.
- If you use the device over a shag carpet, this will block the water outlet and the machine may stop working.
- If there is too much foam or waste water in the lower part of the machine during operation, stop using it immediately and clean the tank before using it again.
- Do not use a detergent that foams.
- Do not try to vacuum the following objects:
 - a. Large quantities of dust (extinguishing agent, etc.)
 - b. Large quantities of sand and pebbles

- c. Large quantities of waste
- d. Metals like needles and pins, glass, etc.
- e. Large and medium plastic bags

Protective device

- If the fan stops working correctly, the protective device will start running to prevent the motor overheating, and the machine will not work for a short period of time, even if you turn it on.
- If the protective device is activated:
 1. Press the power button and disconnect the device plug.
 2. Store the device in a cool place.
 3. After 1 hour, the protective device will deactivate automatically and you will be able to use the appliance again.

1. PARTS AND COMPONENTS

Fig. 1

1. Main body handle
2. Power button
3. Clean-water tank
4. Waste-water tank
5. Right-angle suction nozzle
6. Suction nozzle release tab
7. Clean-water tank release tab
8. Waste-water tank release tab
9. Power cable hook
10. Hose bracket
11. Hose
12. Accessory bracket
13. Right-angle suction nozzle
14. Narrow suction nozzle

To transport the device, you can wind the hose around the machine and tie and hang the power cord in its hook, as shown in Figure 1.

NOTE:

The graphics in this manual are schematic representations and may not exactly match the device.

2. BEFORE USE

- This appliance includes a safety package to protect it during transport. Unpack the appliance and keep the original packaging and materials in a safe place. It will help prevent any damage if the appliance needs to be transported in the future. In case the original packaging is disposed of, make sure all packaging materials are recycled accordingly.
- Make sure all parts and components are included and in good conditions. If any sign of visible damage is observed, immediately contact Cecotec's official Technical Support Service.

Box content:

- Upholstery cleaner
- Right-angle suction nozzle
- Narrow suction nozzle
- Clean-water tank
- Waste-water tank

ENGLISH

- Hose hook
- Instruction manual

3. ASSEMBLY

1. Insert the suction nozzle in the device.
2. Remove the clean-water tank from the main body of the device by pressing the unlocking tab on the fresh-water tank and pulling out the tank. Fill the tank with fresh water up to the "MAX" mark and install the clean-water tank back into the main body of the device. Fig. 2

Attention

- You can add low-foam detergent to the clean-water tank, combined with water in a 5:10 proportion.
- After using your device, you must empty the remaining water in the clean-water tank to avoid leakage and mould formation.
- Do not shake the clean-water tank during installation, as it could cause water leakage.

4. OPERATION

1. Plug the appliance into a power supply.
2. Press the power button to turn the device on.
3. Press and hold the water release button to spray clean water. Spray clean water on the dirt to bring it to the surface.
4. Press the suction inlet on the dirt to bring water and dirt to the surface and vacuum them. Fig. 3
5. Stop spraying clean water and vacuum the waste water. After using the device, dry the surface with a dryer or let it air dry.
6. Switch off the device by pressing the power button.
7. Disconnect the appliance from the power supply.
8. Empty the clean and waste water from the tanks and clean the waste-water tank.

Attention

- Do not spray water continuously over the same spot.
- Take special care when using the device to clean stairs.
- After using the device, hang and wind the power cord in the power cord holder.

Cleaning embedded dirt

Warning:

- You can add low-foam detergent in the clean-water tank or apply it directly on the stain.

- Make sure the detergent will not damage the soiled surface before using it.
- Do not use thinners, aniline, chloroform, or flammable detergents.

Recommended liquids

- Alkaline ionised water.
- Low-foam detergent to the clean water tank combined with water in a 5:10 proportion.
- Citric acid
- Water with hydrochloric acid.

Non-recommended liquids

- Neutral kitchen detergent.
 - Alkaline detergent.
 - Acid detergent.
1. Apply detergent over the soiled surface, spray clean water, and scrub the dirt with a brush to bring it to the surface.
 2. Vacuum the dirt and do not let any detergent remain.

Warning:

- To know the detergent quantity and use, carefully read the manufacturer instructions.
- Stop using the device when the water or foam in the waste-water tank reaches the maximum water level and clean the waste-water tank. Otherwise, water may enter the machine.

Using the right-angle suction nozzle

Press the suction nozzle against the soiled surface and move it from top to bottom.

5. CLEANING AND MAINTENANCE

Attention

- Stop the device and unplug it from the mains before cleaning it.
- Do not wet the device to avoid the risk of electric shock.
- Do not use detergents, thinners, benzene, or other chemical agents to clean the device.
- After every use, you must remove and clean the waste-water tank, the clean-water tank, and the suction nozzle to prevent humidity and dirt remains from emitting bad odours.

5.1. Cleaning the main body

- The most common dirt can be cleaned with a slightly damp cloth.
- The most stubborn dirt can be cleaned with a cloth slightly soaked in detergent and then a cloth slightly soaked in water.

5.2. Cleaning the waste-water tank. Fig. 4

1. When the waste water reaches the maximum level, stop using the device and unplug it from the mains.
2. Remove the waste-water tank. To do so, slide the waste-water tank release tab and remove the waste-water tank.
3. Remove the upper cover of the waste-water tank and empty the waste water.
4. Clean the tank, the upper cover and the sealing strip.
5. Place the waste-water tank in the main body of the device.

Attention

- Do not lean or shake the waste-water tank when transporting or assembling it; otherwise, waste water will easily leak.
- We recommend you empty the waste water before it exceeds the maximum level on the tank; if you continue using the tank after the waste water has exceeded the maximum water level, the float buoy will activate the device for automatic water suction stop and stop suction.

5.3. Cleaning the suction nozzle Fig. 5

1. Press the suction nozzle release button and separate it from the hose bracket
2. Rinse the suction nozzle.
3. Install the suction nozzle cover again. Make sure the pins are correctly placed in the holes and press these parts until they click.

When cleaning the suction nozzle, empty the water outlet if clogged.

Check the hose is not damaged and has no leaks.

5.4. Cleaning the hose. Fig. 6

1. Press the suction nozzle release button and separate it from the hose bracket.
2. Connect the device to the mains and connect the suction nozzle to the main body and press the trigger to clean the hose.

6. TROUBLESHOOTING

If you observe any problem, carefully read this manual and try any possible solutions before contacting Cecotec Technical Support Service.

Problem	Possible causes	Possible solutions
The appliance does not work and the switch is on.	The plug is not correctly connected and loose, so it does not make contact.	Turn off the device and connect it again to the mains.
	The internal line or power cord are broken.	Contact the Technical Support Service of Cecotec.
	The device overheats up and it activates the protective device.	Read the instructions on the protective device.
When pressing the water release button, there is no water or little water released.	The tip is clogged.	Remove the suction nozzle and clean it with clean water.
	The bracket or pump are damaged.	Contact the Technical Support Service of Cecotec.
It does not vacuum or it is too weak.	The power button is in the Off position.	Turn on the power button.
	The waste-water tank is full, which activates the float valve.	Empty the waste-water tank and use it again.
	The hose does not work properly.	Check the hose is not cracked, broken or clogged.
	The waste-water tank is not correctly installed.	Install the waste-water tank correctly.
	The air inlet sponge is blocked.	Clean or replace the sponge.

If after these tasks the problem still occurs, contact the provider or Cecotec's Technical Support Service.

Warning

Do not try to disassemble, repair or modify the device by yourself.

7. TECHNICAL SPECIFICATIONS

Product: Conga 4000 Carpet&Spot Clean

Product reference: 08425

Voltage: 220-240 V, 50/60Hz

ENGLISH

Power: 400 W

IPX4

Actual waste-water tank capacity: around 0.85 litres

Actual clean-water tank capacity: around 1.5 litres.

Hose length: $\varnothing 30$ mm x 1.2 m

Dimensions: 290 mm x 180 mm x 270 mm

Technical specifications may change without prior notification to improve product quality.

Made in China | Designed in Spain

8. DISPOSAL OF OLD ELECTRICAL AND ELECTRONIC APPLIANCES



This symbol indicates that, according to the applicable regulations, the product and/or battery must be disposed of separately from household waste. When this product reaches the end of its shelf life, you should dispose of the cells/batteries/accumulators and take them to a collection point designated by the local authorities.

Consumers must contact their local authorities or retailer for information concerning the correct disposal of old appliances and/or their batteries.

Compliance with the above guidelines will help protecting the environment.

9. TECHNICAL SUPPORT AND WARRANTY

Cecotec shall be liable to the end user or consumer for any lack of conformity that exists at the time of delivery of the product under the terms, conditions, and deadlines established by the applicable regulations.

It is recommended that repairs be carried out by qualified personnel.

If at any moment you detect any problem with your product or have any doubt, do not hesitate to contact the official Cecotec Technical Support Service at +34 963 210 728.

10. COPYRIGHT

The intellectual property rights over the texts in this manual belong to CECOTEC INNOVACIONES, S.L. All rights reserved. The contents of this publication may not, in whole or in part, be reproduced, stored in a retrieval system, transmitted, or distributed by any means (electronic, mechanical, photocopying, recording or similar) without the prior authorization of CECOTEC INNOVACIONES, S.L.

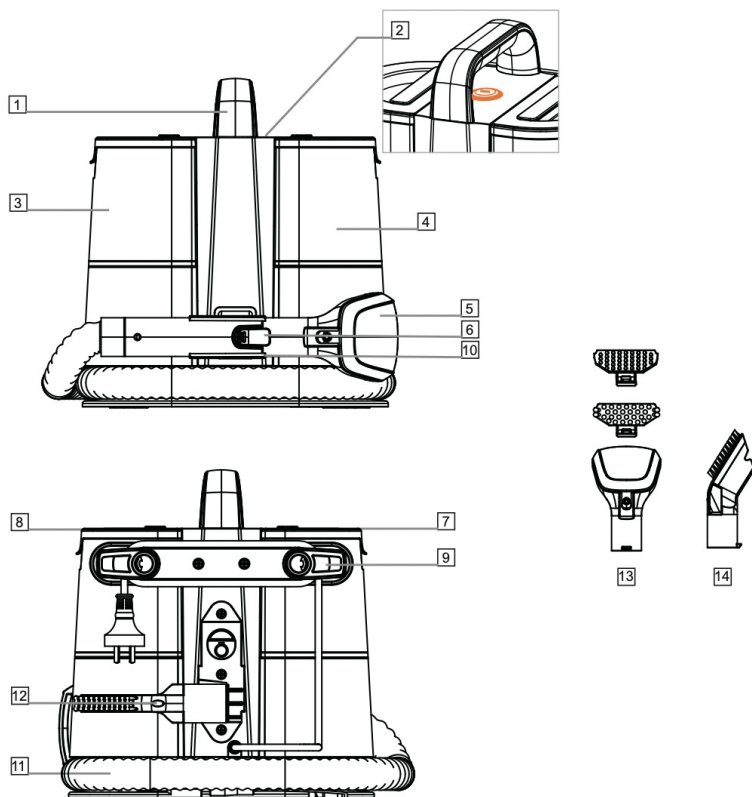


Fig./Img./Abb./Afb./ Rys. 1

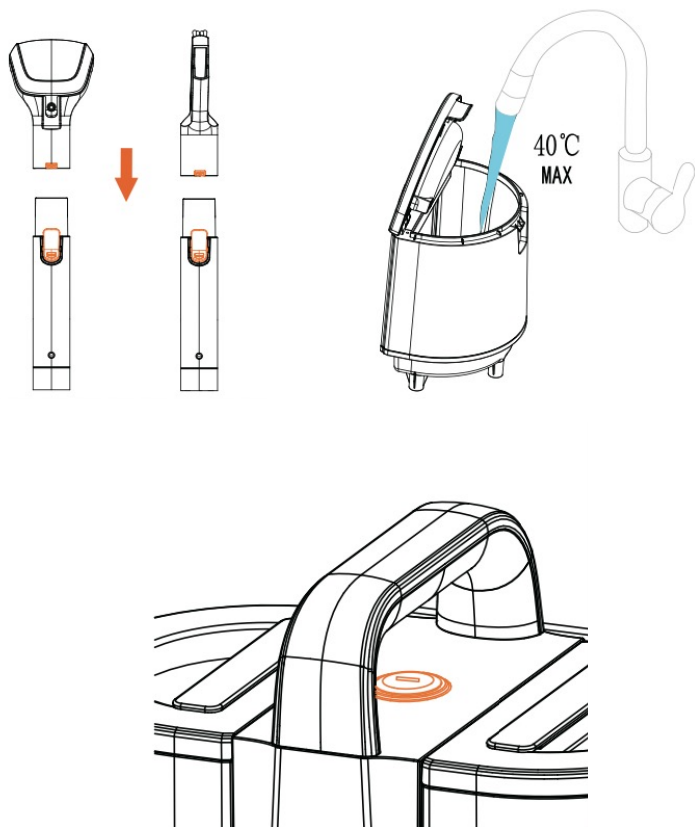


Fig./Img./Abb./Afb./ Rys. 2

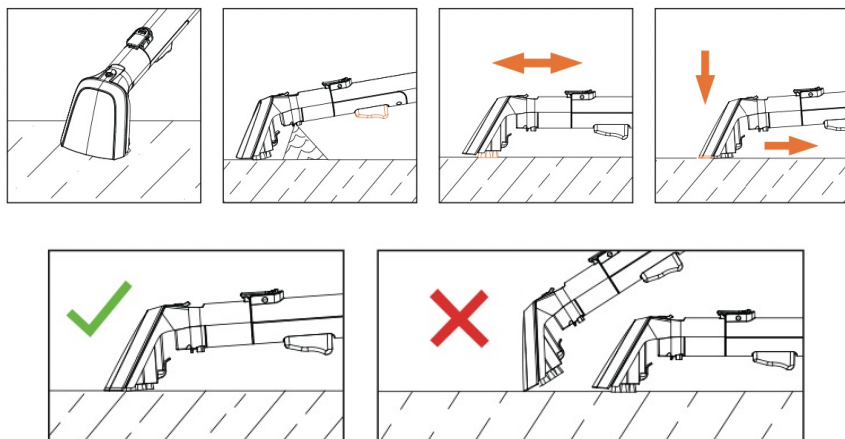


Fig./Img./Abb./Afb./ Rys. 3

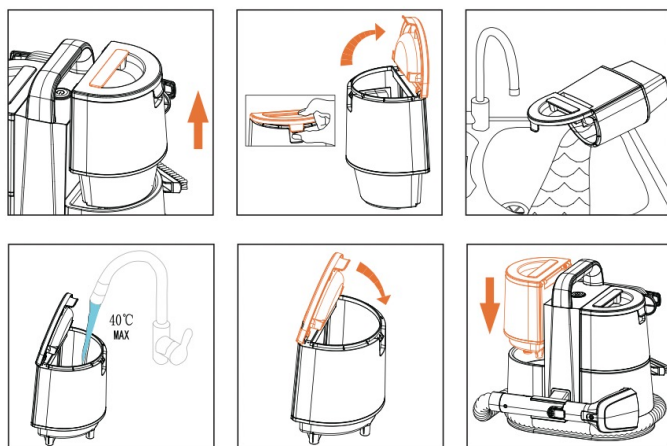


Fig./Img./Abb./Afb./ Rys. 4

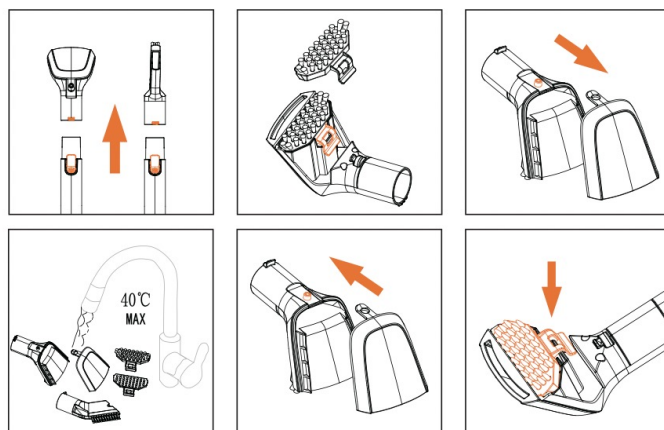


Fig./Img./Abb./Afb./ Rys. 5

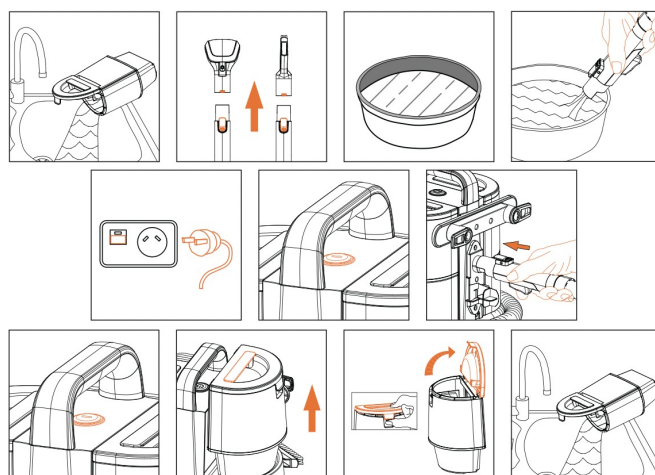


Fig./Img./Abb./Afb./ Rys. 6

www.cecotec.es

Cecotec Innovaciones S.L.
Av. Reyes Católicos, 60
46910, Alfafar (Valencia)
AP01230609